

2022 Community Overview

A SOCIO-ECONOMIC PROFILE

Village of Caroline



POPULATION: 470

(2021)

Median Age

Male	41.8
Female	43.0

Permits Issued (2019): 1
Total Permit Value (2019): \$90,000

Industrial Growth Potential: \$50,000 to \$100,000 with vacant commercial lots, vacant unserviced light industrial lots, serviced commercial and residential vacant lots available.

Average Household Income

\$58,908

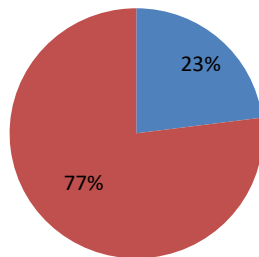
Average After-Tax Household Income

\$51,066

2015

Property Assessments

■ Non-Residential
■ Residential



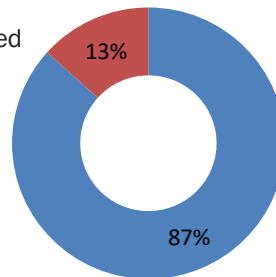
\$36.9M
(2020)

In the Labour Force

295

Participation Rate 63%

■ Employed
■ Unemployed



Major Projects

The final phase of the \$1.3 million 49th Avenue reconstruction project will be completed in 2021.

Mainstreet Rehabilitation (Hwy 54): upgrade of all underground infrastructure, sidewalks and asphalt on the main arterial roadway at a cost of 2.5 million. Completed 2016-2017.

A proud member of



Private Dwellings (2021)
246
 Owned **72%**
 Rented **28%**

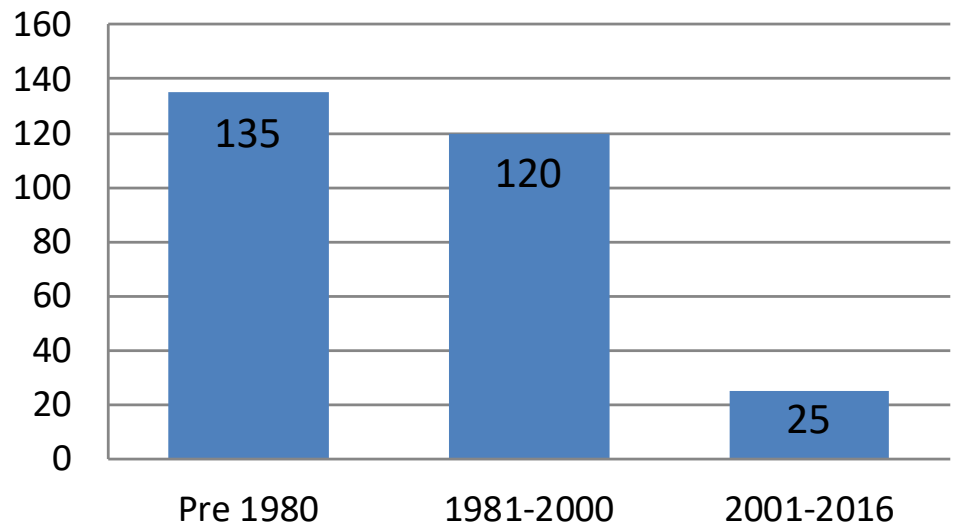
Housing by Structure

Single Family	115
Multi-Family	35
Apartments	5
Movable Dwellings	80

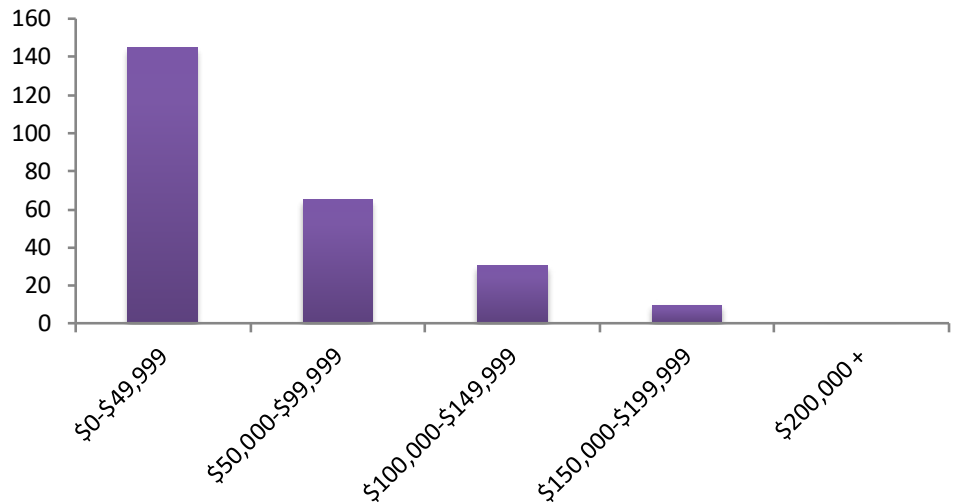
Average Household Consumption

Shelter	\$20,814
Food	\$9,857
Household operation & furnishings	\$7,879
Health care	\$3,142
Transportation	\$16,218
Recreation & Entertainment	\$5,813
Personal care & clothing	\$6,020
Child Care	\$418
Education & books	\$1,204
Miscellaneous expenditures	\$2,287
Total	\$73,652

Occupied Private Dwelling by Period of Construction



Number of Households by Income Group



Quality of Life

Caroline is five minutes from the wonders of nature within the foothills area, offering many outdoor activities that encompass the natural environment of nearby forests, hills, lakes, and rivers.



Industrial and Commercial Business Parks

A 64 acre parcel is being developed in 2017 to offer larger light industrial unserviced lots for phase 1. Future phase 2 will develop serviced highway commercial land along the east highway entrance to the community.



Top Employers

Caroline School (K-12)

Red Rock Construction

Pioneer General Store (grocery)

Caroline Supplies (Retail Outdoor Supplies and Goods/Post Office)

Sportsman Bar and Grill

Caroline Municipal Office

Caroline Arena and Hub

ATB Financial

NAPA Auto and Farm Retail

Taimi Meats

Occupations

(number of jobs)

Sales and service occupations	3
Trades, transport and equipment operators and related occupations	3
Business, finance and administration occupations	3
Education, law and social, community and government services	3
Management occupations	3
Natural resources, agriculture and related production occupations	3
Health occupations	3
Manufacturing and utilities	3
Natural and applied sciences and related occupations	3
Art, culture, recreation and sport	3

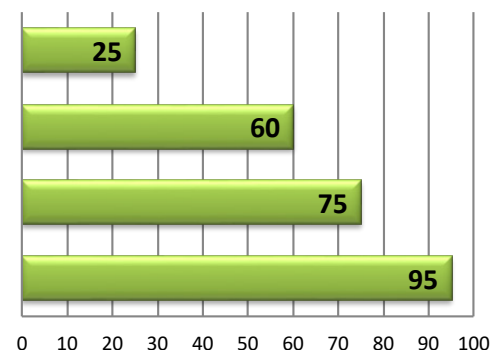
Top Ten Industries

(number of jobs)

Retail trade	2
Mining, quarrying, and oil and gas extraction	2
Construction	2
Health care and social assistance	2
Accommodation and food services	2
Educational services	2
Services other than public administration	2
Manufacturing	2
Public administration	2
Professional, scientific and technical services	2

Highest Educational Attainment (Ages 25-64)

University degree at bachelor level or above	25
Apprenticeship or trades certificate	60
Other Postsecondary below bachelor level	75
High School diploma or equivalent	95



Vehicle Registrations (2020)

2,703

2022 Community Overview

A SOCIO-ECONOMIC PROFILE



Community Infrastructure

The Village has a regional fire service and hall, K-12 school, medical clinic two days per week, ambulance service, before- and after-school care, playschool, independent living retirement units, and a seniors' centre. Recent renovations have been made to the Kurt Browning Arena & Community Hall, including a new display of memorabilia.

Education (2020)

K-9 Enrollment

278

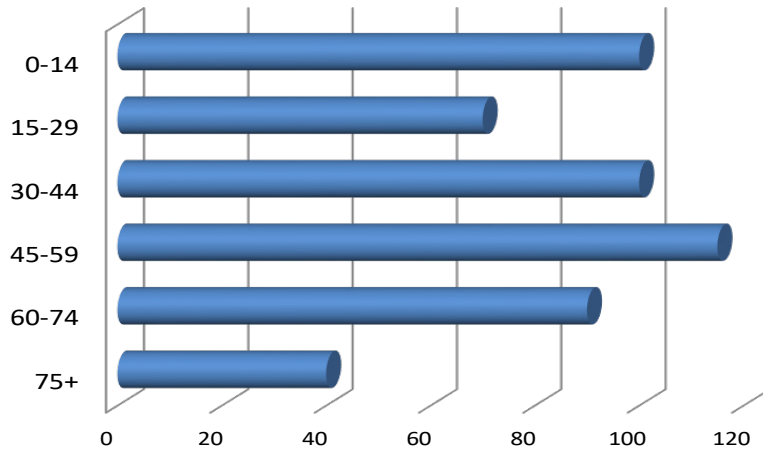
High School Enrollment

69

Post-secondary Enrollment

50

Population by Age Group



New Apprentices

5

(2015)



For more information, contact:

Village of Caroline Office

Ph: 403-722-3781

Email: info@villageofcaroline.com

www.villageofcaroline.com

Produced in partnership with



caepalberta.com

The data used to prepare this report has been sourced from the Alberta Regional Dashboard, municipal data, Stats Canada Census 2016 and 2021 Statistics Canada. 2022. (table). Census Profile. 2021 Census. Statistics Canada Catalogue no. 98-316-X2021001. Ottawa. Released February 9, 2022. The reference period is the calendar year 2015 for all Census income variables. This report is for information purposes only and CAEP and Pinnacle Communication & Media Inc do not assume any responsibility or liability by providing it. While every effort has been made to control errors, users are advised to confirm any numbers before making decisions or assumptions based on the information in this document.

For more information about CAEP, contact:

Ph: 403-357-2237

Email: info@caepalberta.com